

VICONNECT SPORTS IMPRESSIVE TECHNICAL ADVANTAGES



VICONNECT
PROMOTES SUSTAINABILITY

- All flush plates with dual flush to reduce water consumption
- Flush quantity easy to adjust (6/3 l or 4.5/3 l)



- Intuitive and fast installation of the flush plate thanks to innovative cable technology with bayonet joint

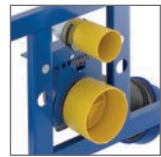


- Flexible wall installation covers a diverse range of applications



- Reduced noise flow thanks to tested filling valve and drain fitting

SupraFix
2.0



- Integrated vertical struts for secure installation with SupraFix 2.0 and WCs with shortened rear panel



- Durable frame in powder-coated steel

ViClean

- For use with ViClean



- Height-adjustable feet



- Waste pipe can be extended in 4 stages to adjust the depth

VILLEROY & BOCH

United Kingdom

Villeroy & Boch (UK) Limited
Bathroom, Wellness and Tiles Division
267 Merton Road
London SW 18 5JS

9301 G1 G4 - 2015 Printed in Germany - Variations in colour and dimensions comply with the customary tolerances. We reserve the right to alter the product range, to modify models and to change colours.

Your sales consultant:



PRO.VILLEROY-BOCH.COM

Villeroy & Boch
1748

VICONNECT

The clever connection



THE ONE-STOP SOLUTION FOR WALL-MOUNTED WCs

The new ViConnect installation systems are ideal for use with all the ceramic WCs from Villeroy & Boch. The product category comprises reliable dry-wall and brick-wall construction elements tailored to every building scenario for intuitive and fast installation.

The complete one-stop solution in tried and tested Villeroy & Boch quality – now not only for bathroom installations but also for the components on and behind the wall. Made in Germany.

SELECT THE CLEVER SOLUTION TO SUIT YOUR NEEDS: ALL THE INSTALLATION SYSTEMS ARE FULLY COMPATIBLE WITH EACH OF THE CERAMIC WCs FROM THE VILLEROY & BOCH RANGE.



ViConnect WC frames



WC-ELEMENT FOR DRY-WALL CONSTRUCTION – STANDARD HEIGHT

Depth 135 – 205 mm. For all wall-mounted WCs (Standard, Compact, Vita), for use with SupraFix 2.0, DirectFlush, ViClean

MEASUREMENTS (HxWxD):	1120 x 525 x 135 – 205 mm
WEIGHT:	15 kg
ADJUSTMENT RANGE OF FEET:	from unfinished floor level to upper edge of finished floor: 0–200 mm
FASTENING POINTS:	4
OPERATION:	front operated
FLUSH QUANTITY:	3/6l adjustable to 3/4.5l, max. flush quantity 7.5l
CERTIFICATIONS:	EN 14055, WRAS

Art.-Nr. 92246100

WC-ELEMENT FOR DRY-WALL CONSTRUCTION – FREESTANDING

Depth 165 – 215 mm. For all wall-mounted WCs (Standard, Compact, Vita), for use with SupraFix 2.0, DirectFlush



MEASUREMENTS (HxWxD):	1120 x 450 x 165 – 215 mm
WEIGHT:	22.66 kg
ADJUSTMENT RANGE OF FEET:	from unfinished floor level to upper edge of finished floor: 0–200 mm
FASTENING POINTS:	2
OPERATION:	front operated
FLUSH QUANTITY:	3/6 l, max. flush quantity 7.5 l

CERTIFICATIONS: EN 14055, NF

Art.-Nr. 92246500

WC-ELEMENT FOR DRY-WALL CONSTRUCTION – LOW

Depth 155 – 205 mm. For all wall-mounted WCs (Standard, Compact, Vita), for use with SupraFix 2.0, DirectFlush



MEASUREMENTS (HxWxD):	820 x 525 x 155 – 205 mm
WEIGHT:	11 kg
ADJUSTMENT RANGE OF FEET:	from unfinished floor level to upper edge of finished floor: 0–200 mm
FASTENING POINTS:	4
OPERATION:	front/top operated
FLUSH QUANTITY:	3/6l adjustable to 3/4.5l, max. flush quantity 9l

CERTIFICATIONS: EN 14055

Art.-Nr. 92247500

WC-ELEMENT FOR DRY-WALL CONSTRUCTION – LOW

Depth 155 – 205 mm. For all wall-mounted WCs (Standard, Compact, Vita), for use with SupraFix 2.0, DirectFlush



MEASUREMENTS (HxWxD):	985 x 525 x 155 – 205 mm
WEIGHT:	13 kg
ADJUSTMENT RANGE OF FEET:	from unfinished floor level to upper edge of finished floor: 0–200 mm
FASTENING POINTS:	4
OPERATION:	front/top operated
FLUSH QUANTITY:	3/6l adjustable to 3/4.5l, max. flush quantity 9l

CERTIFICATIONS: EN 14055, WRAS

Art.-Nr. 92247800

WC-ELEMENT FOR DRY-WALL CONSTRUCTION – COMPACT

Depth min. 95 mm. For all wall-mounted WCs (Standard, Compact, Vita), for use with SupraFix 2.0, DirectFlush



MEASUREMENTS (HxWxD):	1185 x 665 x min. 95 mm
WEIGHT:	15.5 kg
ADJUSTMENT RANGE OF FEET:	from unfinished floor level to upper edge of finished floor: 0–200 mm
FASTENING POINTS:	6
OPERATION:	front operated
FLUSH QUANTITY:	3/6l adjustable to 3/4.5l, max. flush quantity 7.5l

CERTIFICATIONS: EN 14055, WRAS

Art.-Nr. 92247600

ViConnect fixing elements for handles

VICONNECT WC-SYSTEM FOR DRY-WALL CONSTRUCTION

Depth 55 mm. For assembly to left of WC element 9224 61, 9224 65 and for barrier-free installation of a folding support



MEASUREMENTS (HxWxD):	1150 x 310 x 55 mm
WEIGHT:	5.35 kg

Art.-Nr. 92198300

VICONNECT WC-SYSTEM FOR DRY-WALL CONSTRUCTION

Depth 55 mm. For assembly to right of WC element 9224 61, 9224 65 and for barrier-free installation of a folding support



MEASUREMENTS (HxWxD):	1150 x 310 x 55 mm
WEIGHT:	5.35 kg

Art.-Nr. 92210900

ViConnect concealed cisterns

CONCEALED CISTERN

Depth 124 mm. For all wall-mounted WCs (Standard, Compact, Vita) and for floor-standing WCs, back to wall for use with SupraFix 2.0, DirectFlush



MEASUREMENTS (HxWxD):	735 x 528 x 124 mm
WEIGHT:	4 kg
FASTENING POINTS:	2
OPERATION:	front operated
FLUSH QUANTITY:	3/6l adjustable to 3/4.5l, max. flush quantity 4/7.5l

CERTIFICATIONS: EN 14055, WRAS

Art.-Nr. 92248300

CONCEALED CISTERN - COMPACT

Depth 80 mm. For all wall-mounted WCs (Standard, Compact, Vita) and for floor-standing WCs, back to wall for use with SupraFix 2.0, DirectFlush



MEASUREMENTS (HxWxD):	740 – 825 x 648 x 80 mm
WEIGHT:	4.2 kg
FASTENING POINTS:	4
OPERATION:	front operated
FLUSH QUANTITY:	3/6l adjustable to 3/4.5l, max. flush quantity 7.5l

CERTIFICATIONS: EN 14055

Art.-Nr. 92248200

VICONNECT FLUSH PLATES

MORE SCOPE – AT THE PUSH OF A BUTTON

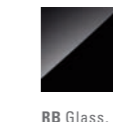
The modern and timeless flush plates in exclusive Villeroy & Boch design open up additional scope for an individual look to the bathroom. They are available in various finishes and colours and equipped with state-of-the-art technology.

L200



ART.-NR.: 921843-xx
MATERIAL: Glass & LED

COLOUR VARIATIONS

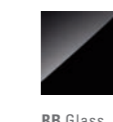


RB Glass, Glossy Black

M200



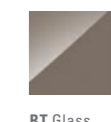
ART.-NR.: 922400-xx
MATERIAL: Glass



RB Glass, Glossy Black



RA Glass, Glossy Grey



RT Glass, Terra

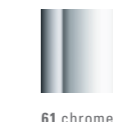


RE Glass, Glossy White

E200



ART.-NR.: 922490-xx
MATERIAL: Plastics



61 chrome



69 brushed chrome



68 white

E100



ART.-NR.: 922485-xx
MATERIAL: Plastics



61 chrome



69 brushed chrome



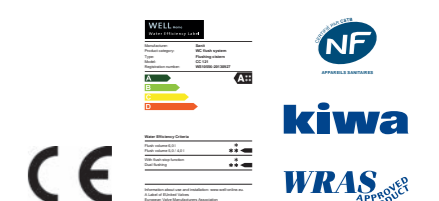
68 white



Villeroy & Boch

VICONNECT – PROVEN VILLEROY & BOCH QUALITY

- All products made in Germany.
- Our reliable installation systems are subjected to regular testing in internal trials with both established and new products from Villeroy & Boch.
- The high standard of the Villeroy & Boch installation systems is confirmed by various certificates and endorsements from independent institutes.



25 years THERE IS A 25-YEAR AVAILABILITY GUARANTEE FOR REPLACEMENT PARTS FOR VICONNECT